

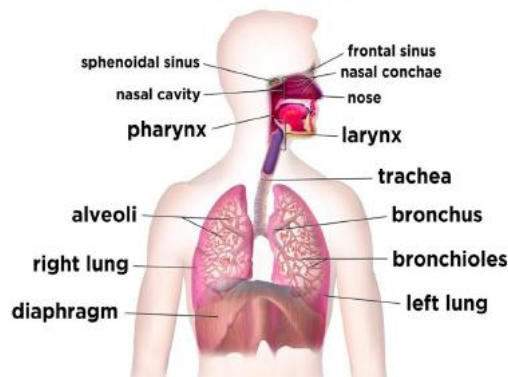
L3 Health and Social Care

Section A: Key vocabulary

Vocabulary	Definition
Cardiovascular	Relating to the heart and blood vessels.
Malfunctions	To function imperfectly or badly, fail to operate normally.
Lymph	Lymph is the fluid that flows through the lymphatic system, a system composed of lymph vessels (channels) and intervening lymph nodes whose function, like the venous system, is to return fluid from the tissues to the central circulation.

Understand the respiratory system, malfunctions and their impact on individuals

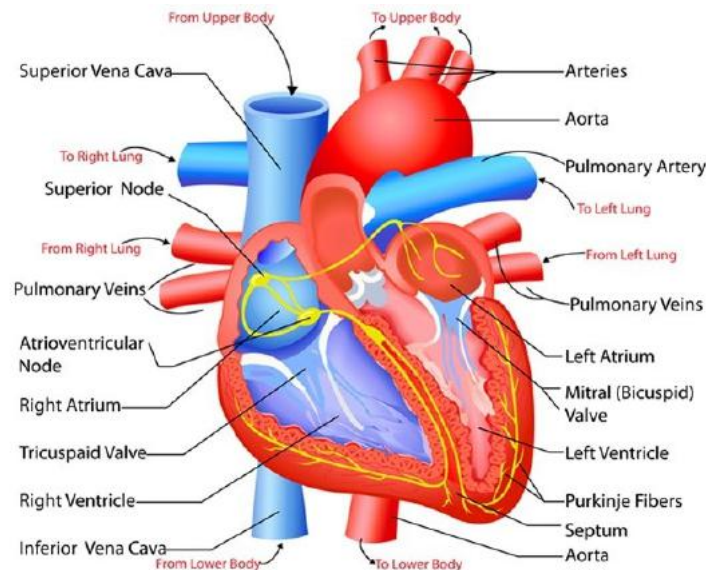
The Respiratory System



Section B:

Unit 4

This unit aims to introduce you to the basic structure and functions of the body systems involved in everyday activities and maintenance of health, including cardiovascular, respiratory and digestive systems. You will also understand the part played by organs such as the pancreas, liver and kidney. You will investigate the systems and organs involved in detecting and responding to change such as the nervous system as well as the eyes and ears.



Section C:

Things you will learn about

- Cardiovascular malfunctions
- hypertension
 - coronary heart disease (e.g. angina, heart attack)
- Monitoring, treatment and care needs for the cardiovascular malfunctions
- Impact on lifestyle changes, medication, blood pressure readings, ECG traces, coronary bypass as appropriate to the condition

Recommended research/reading

Websites:

<http://www.cancerindex.org/medterm/medtm8.htm#section4>

Suggested book to read

