

L3 Health and Social Care

Section A: Key vocabulary

Vocabulary	Definition
Discriminatory Practices	Discriminatory practices means practices that discriminate on the basis of race, sex, sexual orientation, age, religion, colour, ancestry, handicapped status, marital status, or arrest and court record.
National initiatives	National Initiatives, also known as Acts or Laws are legislations and code set by the government outlining how people should act or behave in situations they are faced with.

Learning to recognise discriminatory practices

There are many examples reported by the media about cases of discriminatory practice in health, social care and child care settings.

Rsearch the web site below:

<https://www.citizensadvice.org.uk/health/discrimination-in-health-and-care-services/identifying-discrimination/discrimination-in-health-and-care-services-what-s-the-unfair-treatment/>

Section B:

Unit 2

Equality, diversity and rights in health and social care

LO1 Understand concepts of equality, diversity and rights and how these are applied in the context of health, social care and child care environments

LO2 Understand the impact of discriminatory practices on individuals in health, social care and child care environments

LO3 Understand how current legislation and national initiatives promote anti-discriminatory practice in health, social care and childcare environments

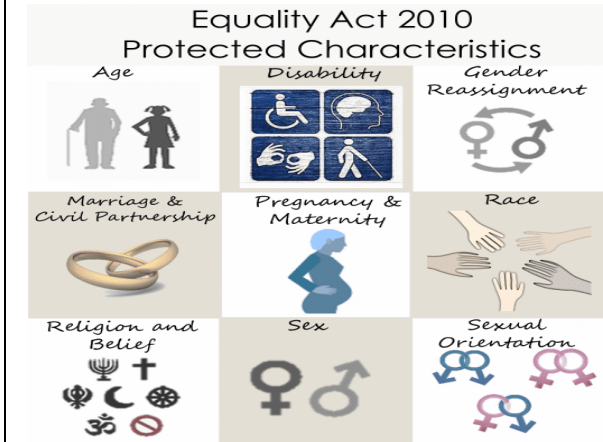
LO4 Understand how equality, diversity and rights in health, social care and childcare environments are promoted.

Research equality and human rights legislation.

<https://www.equalityhumanrights.com/en>

Section C:

Information to research



Suggested book to read

